

The image features a dark blue rectangular overlay on a background of light-colored wood with a vertical grain. The text is in a bold, red, sans-serif font. At the top right of the overlay is the brand name 'freud.' with a white dot. Below it is a thin white horizontal line. Underneath the line is the product name 'LM09 - Thin kerf ripping blade'. The main focus is the large text 'Material saving' which is split across two lines. The background shows several thin, light-colored wood planks, some of which are being cut by a blade, illustrating the 'material saving' benefit.

**freud.**

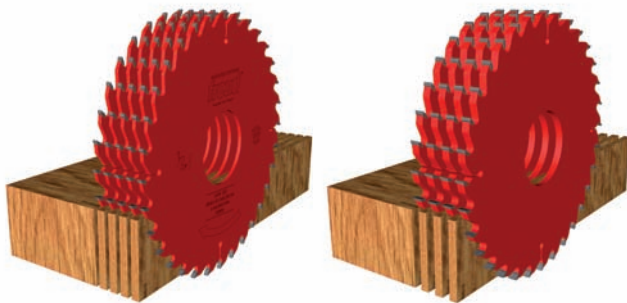
**LM09 - Thin kerf ripping blade**

**Material  
saving**

**freud.**

**LM09 - Thin kerf ripping blade**

**Material  
saving**



Thin kerf ripping saw blades

Standard ripping saw blades

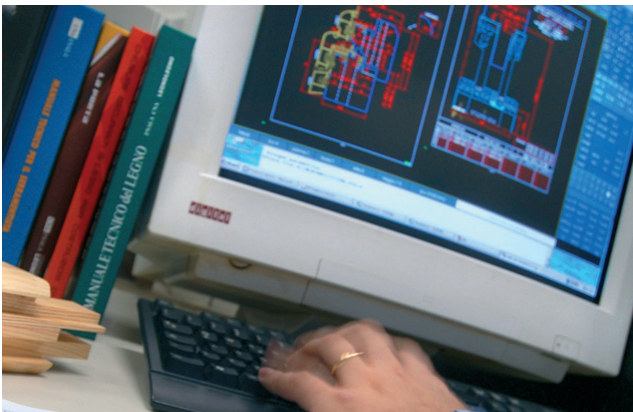
**Dedicated body thickness**

Extra thin body to reduce material waste to a minimum.



**Improved manufacturing process**

High precision manufacturing & dedicated body materials to allow stability for thin body.



**Customized products:**

Products are designed and manufactured according to the customers' needs and requirements.

**freud.**

Via Padova, 3 - 33010 Tavagnacco (UD) Italy  
Tel. +39 0432 551411 Fax +39 0432 551440  
info@freud.it - www.freud.it